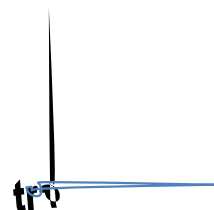
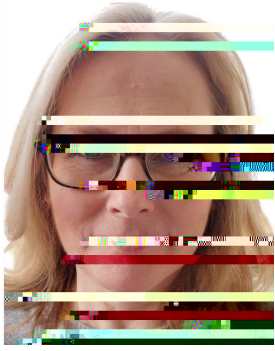


*Real Connections: Leveraging Literacy Strategies  
for the World Language Classroom*





Webinar presenter: **Beth Slocum** is a teacher of French and Spanish in the Pavilion Central School District and an adjunct instructor for Genesee Community College. Beth is a past-president of NYSAFLT who is a co-facilitator and mentor for the Leaders of Tomorrow Program. She serves on the OBE-WL Content Advisory panel as well as on the NECTFL Board of Directors. Closer to home, Beth serves as the parent representative on the Genesee Region Teachers' Center (GRTC) Policy Board and is the coordinator of the GRTC World Language Teachers' Network.